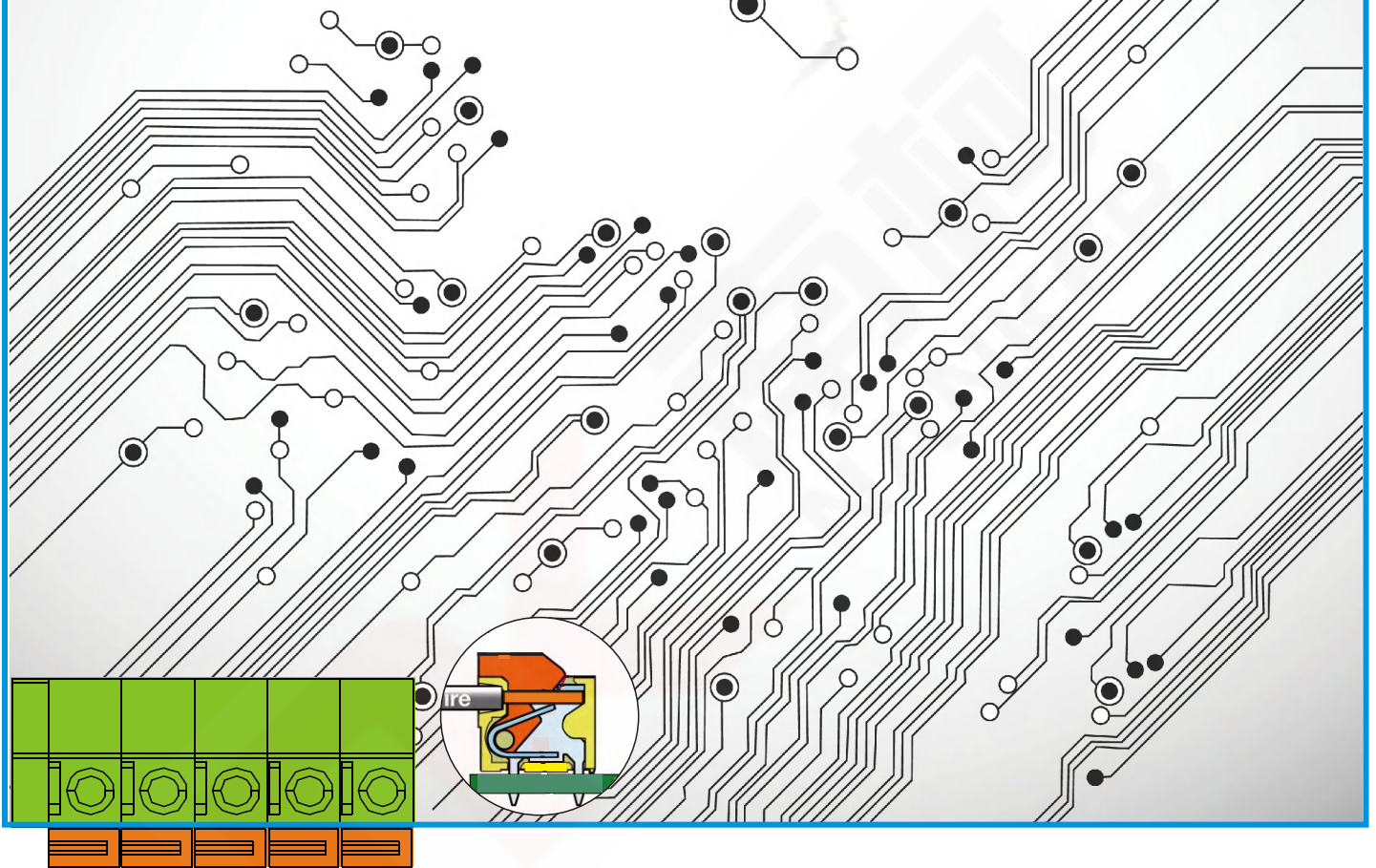


# Spring Clamp System

## Euro PCB screwless terminal block



### Nomenclature rules

Example:

SD HD 250 xx x xxx  
① ② ③ ④ ⑤ ⑥

- ① Type
- ② Product style
- ③ Pitch
- ④ Poles
- ⑤ Color
- ⑥ Custom

### Color

0	Black	5	Green
1	Brown	6	Blue
2	Red	7	Violet
3	Orange	8	Dark grey
4	Yellow	9	White

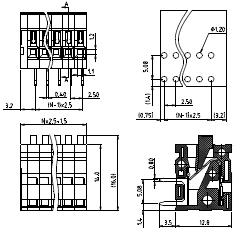
PA,PB,PC... Series . Spring clamp system, The clamp spring is made of High strength stainlesssteel.

These series also provide with mounting type and without mounting one to avoid vibration environment and it is easy to insert the wire by hand. The wire entry way includes horizontal and vertical to meet your design requirements and we are providing 2-24p desingn.

The series are extremely suitable for industrial control, automation, security, lighting and other industries.



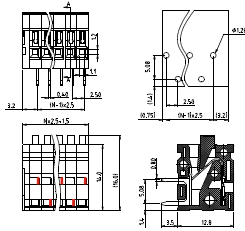
**SDHD250** Pitch 2.5mm  
Poles 1p~16p  
PCB spring-cage terminal blocks, horizontal wire inlet



Technical data				
Approval  (Pending)				
Technical data(UL/cUL)	Use Group	B	C	D
Nominal voltage (V)	150	-	-	-
Nominal current (A)	6	-	-	-
Connection capacity(AWG)	26-18	-	-	-
Technical data in accordance with IEC				
Rated insulation voltage at pollution degree 2 (V)	160	-	-	-
Rated current/conductor cross-section (A/mm <sup>2</sup> )	4/0.5	-	-	-
Solid/stranded(mm <sup>2</sup> )	0.14-0.5/0.14-0.5	-	-	-
Surge voltage category/pollution degree	III/3	III/2	II/2	-
Rated insulation voltage(V)	63	160	320	-
Rated surge voltage(kV)	2.5	2.5	2.5	-
General data				
Stripping length(mm)	9-10	-	-	-
Type of insulation material group	PA 66 I	-	-	-
Inflammability class acc. To UL 94	V0	-	-	-
Borehole diameter/pin dimensions(mm)	1.2/0.4*0.8	-	-	-



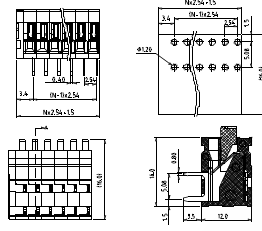
**SDHZ250** Pitch 2.5mm  
Poles 1p~16p  
PCB spring-cage terminal blocks, horizontal wire inlet



Technical data				
Approval  (Pending)				
Technical data(UL/cUL)	Use Group	B	C	D
Nominal voltage (V)	150	-	-	-
Nominal current (A)	6	-	-	-
Connection capacity(AWG)	26-18	-	-	-
Technical data in accordance with IEC				
Rated insulation voltage at pollution degree 2 (V)	160	-	-	-
Rated current/conductor cross-section (A/mm <sup>2</sup> )	4/0.5	-	-	-
Solid/stranded(mm <sup>2</sup> )	0.14-0.5/0.14-0.5	-	-	-
Surge voltage category/pollution degree	III/3	III/2	II/2	-
Rated insulation voltage(V)	63	160	320	-
Rated surge voltage(kV)	2.5	2.5	2.5	-
General data				
Stripping length(mm)	9-10	-	-	-
Type of insulation material group	PA 66 I	-	-	-
Inflammability class acc. To UL 94	V0	-	-	-
Borehole diameter/pin dimensions(mm)	1.2/0.4*0.8	-	-	-



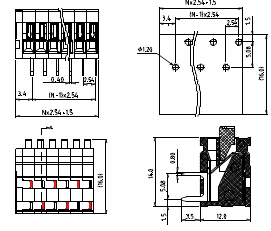
**SDHD254** Pitch 2.54mm  
Poles 1p~16p  
PCB spring-cage terminal blocks, horizontal wire inlet



Technical data				
Approval  (Pending)				
Technical data(UL/cUL)	Use Group	B	C	D
Nominal voltage (V)	150	-	-	-
Nominal current (A)	6	-	-	-
Connection capacity(AWG)	26-18	-	-	-
Technical data in accordance with IEC				
Rated insulation voltage at pollution degree 2 (V)	160	-	-	-
Rated current/conductor cross-section (A/mm <sup>2</sup> )	4/0.5	-	-	-
Solid/stranded(mm <sup>2</sup> )	0.14-0.5/0.14-0.5	-	-	-
Surge voltage category/pollution degree	III/3	III/2	II/2	-
Rated insulation voltage(V)	63	160	320	-
Rated surge voltage(kV)	2.5	2.5	2.5	-
General data				
Stripping length(mm)	9-10	-	-	-
Type of insulation material group	PA 66 I	-	-	-
Inflammability class acc. To UL 94	V0	-	-	-
Borehole diameter/pin dimensions(mm)	1.2/0.4*0.8	-	-	-



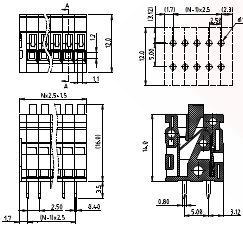
**SDHZ254** Pitch 2.54mm  
Poles 1p~16p  
PCB spring-cage terminal blocks, horizontal wire inlet



Technical data				
Approval  (Pending)				
Technical data(UL/cUL)	Use Group	B	C	D
Nominal voltage (V)	150	-	-	-
Nominal current (A)	6	-	-	-
Connection capacity(AWG)	26-18	-	-	-
Technical data in accordance with IEC				
Rated insulation voltage at pollution degree 2 (V)	160	-	-	-
Rated current/conductor cross-section (A/mm <sup>2</sup> )	4/0.5	-	-	-
Solid/stranded(mm <sup>2</sup> )	0.14-0.5/0.14-0.5	-	-	-
Surge voltage category/pollution degree	III/3	III/2	II/2	-
Rated insulation voltage(V)	63	160	320	-
Rated surge voltage(kV)	2.5	2.5	2.5	-
General data				
Stripping length(mm)	9-10	-	-	-
Type of insulation material group	PA 66 I	-	-	-
Inflammability class acc. To UL 94	V0	-	-	-
Borehole diameter/pin dimensions(mm)	1.2/0.4*0.8	-	-	-



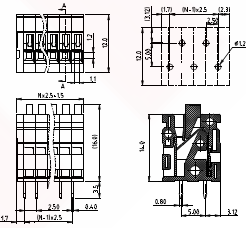
**SDVD250** Pitch 2.5mm  
Poles 1p~16p  
PCB spring-cage terminal blocks, vertical wire inlet



Technical data				
Approval  (Pending)				
Technical data(UL/cUL)	Use Group	B	C	D
Nominal voltage (V)	150	-	-	-
Nominal current (A)	6	-	-	-
Connection capacity(AWG)	26-18	-	-	-
Technical data in accordance with IEC				
Rated insulation voltage at pollution degree 2 (V)	160	-	-	-
Rated current/conductor cross-section (A/mm <sup>2</sup> )	4/0.5	-	-	-
Solid/stranded(mm <sup>2</sup> )	0.14-0.5/0.14-0.5	-	-	-
Surge voltage category/pollution degree	III/3	III/2	II/2	-
Rated insulation voltage(V)	63	160	320	-
Rated surge voltage(kV)	2.5	2.5	2.5	-
General data				
Stripping length(mm)	9-10	-	-	-
Type of insulation material group	PA 66 I	-	-	-
Inflammability class acc. To UL 94	V0	-	-	-
Borehole diameter/pin dimensions(mm)	1.2/0.4*0.8	-	-	-



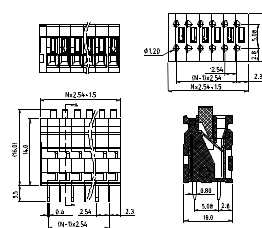
**SDVZ250** Pitch 2.5mm  
Poles 1p~16p  
PCB spring-cage terminal blocks, vertical wire inlet



Technical data				
Approval  (Pending)				
Technical data(UL/cUL)	Use Group	B	C	D
Nominal voltage (V)	150	-	-	-
Nominal current (A)	6	-	-	-
Connection capacity(AWG)	26-18	-	-	-
Technical data in accordance with IEC				
Rated insulation voltage at pollution degree 2 (V)	160	-	-	-
Rated current/conductor cross-section (A/mm <sup>2</sup> )	4/0.5	-	-	-
Solid/stranded(mm <sup>2</sup> )	0.14-0.5/0.14-0.5	-	-	-
Surge voltage category/pollution degree	III/3	III/2	II/2	-
Rated insulation voltage(V)	63	160	320	-
Rated surge voltage(kV)	2.5	2.5	2.5	-
General data				
Stripping length(mm)	9-10	-	-	-
Type of insulation material group	PA 66 I	-	-	-
Inflammability class acc. To UL 94	V0	-	-	-
Borehole diameter/pin dimensions(mm)	1.2/0.4*0.8	-	-	-



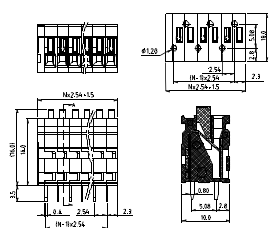
**SDVD254** Pitch 2.54mm  
Poles 1p~16p  
PCB spring-cage terminal blocks, vertical wire inlet



Technical data				
Approval  (Pending)				
Technical data(UL/cUL)	Use Group	B	C	D
Nominal voltage (V)	150	-	-	-
Nominal current (A)	6	-	-	-
Connection capacity(AWG)	26-18	-	-	-
Technical data in accordance with IEC				
Rated insulation voltage at pollution degree 2 (V)	160	-	-	-
Rated current/conductor cross-section (A/mm <sup>2</sup> )	4/0.5	-	-	-
Solid/stranded(mm <sup>2</sup> )	0.14-0.5/0.14-0.5	-	-	-
Surge voltage category/pollution degree	III/3	III/2	II/2	-
Rated insulation voltage(V)	63	160	320	-
Rated surge voltage(kV)	2.5	2.5	2.5	-
General data				
Stripping length(mm)	9-10	-	-	-
Type of insulation material group	PA 66 I	-	-	-
Inflammability class acc. To UL 94	V0	-	-	-
Borehole diameter/pin dimensions(mm)	1.2/0.4*0.8	-	-	-



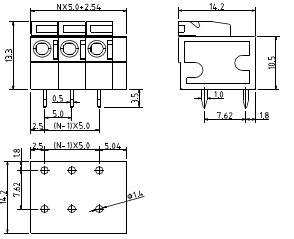
**SDVZ254** Pitch 2.54mm  
Poles 1p~16p  
PCB spring-cage terminal blocks, vertical wire inlet



Technical data				
Approval  (Pending)				
Technical data(UL/cUL)	Use Group	B	C	D
Nominal voltage (V)	150	-	-	-
Nominal current (A)	6	-	-	-
Connection capacity(AWG)	26-18	-	-	-
Technical data in accordance with IEC				
Rated insulation voltage at pollution degree 2 (V)	160	-	-	-
Rated current/conductor cross-section (A/mm <sup>2</sup> )	4/0.5	-	-	-
Solid/stranded(mm <sup>2</sup> )	0.14-0.5/0.14-0.5	-	-	-
Surge voltage category/pollution degree	III/3	III/2	II/2	-
Rated insulation voltage(V)	63	160	320	-
Rated surge voltage(kV)	2.5	2.5	2.5	-
General data				
Stripping length(mm)	9-10	-	-	-
Type of insulation material group	PA 66 I	-	-	-
Inflammability class acc. To UL 94	V0	-	-	-
Borehole diameter/pin dimensions(mm)	1.2/0.4*0.8	-	-	-



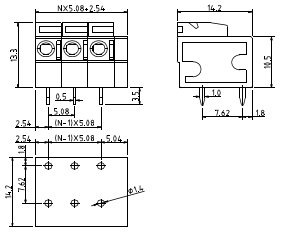
**SAHO500** Pitch 5.0mm  
Poles 1p~24p  
PCB spring-cage terminal blocks, horizontal wire inlet



Technical data				
Approval				
Technical data(UL/cUL)	Use Group	B	C	D
Nominal voltage (V)		300	-	300
Nominal current (A)		10	-	10
Connection capacity(AWG)		24-14	-	24-14
Technical data in accordance with IEC				
Rated insulation voltage at pollution degree 2 (V)		320		
Rated current/conductor cross-section (A/mm <sup>2</sup> )		15/2.5		
Solid/stranded(mm <sup>2</sup> )		0.2-2.5/0.2-1.5		
Surge voltage category/pollution degree		III/3	III/2	II/2
Rated insulation voltage(V)		250	320	630
Rated surge voltage(kV)		4	4	4
General data				
Stripping length(mm)		9-10		
Type of insulation material group		PA 66 I		
Inflammability class acc. To UL 94		V0		
Borehole diameter/pin dimensions(mm)		1.4/0.5*1		



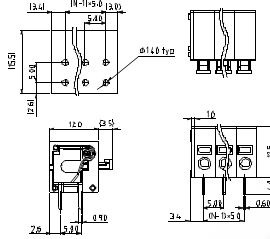
**SAHO508** Pitch 5.08mm  
Poles 1p~24p  
PCB spring-cage terminal blocks, horizontal wire inlet



Technical data				
Approval				
Technical data(UL/cUL)	Use Group	B	C	D
Nominal voltage (V)		300	-	300
Nominal current (A)		10	-	10
Connection capacity(AWG)		24-14	-	24-14
Technical data in accordance with IEC				
Rated insulation voltage at pollution degree 2 (V)		320		
Rated current/conductor cross-section (A/mm <sup>2</sup> )		15/2.5		
Solid/stranded(mm <sup>2</sup> )		0.2-2.5/0.2-1.5		
Surge voltage category/pollution degree		III/3	III/2	II/2
Rated insulation voltage(V)		250	320	630
Rated surge voltage(kV)		4	4	4
General data				
Stripping length(mm)		9-10		
Type of insulation material group		PA 66 I		
Inflammability class acc. To UL 94		V0		
Borehole diameter/pin dimensions(mm)		1.4/0.5*1		



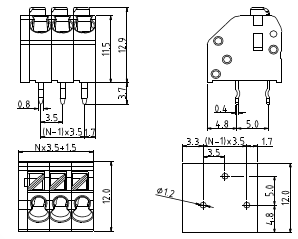
**SPHO500** Pitch 5.0mm  
Poles 2p~24p  
PCB spring-cage terminal blocks, horizontal wire inlet



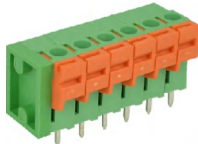
Technical data				
Approval				
Technical data(UL/cUL)	Use Group	B	C	D
Nominal voltage (V)		300	-	300
Nominal current (A)		10	-	10
Connection capacity(AWG)		26-16	-	26-16
Technical data in accordance with IEC				
Rated insulation voltage at pollution degree 2 (V)		320		
Rated current/conductor cross-section (A/mm <sup>2</sup> )		10/1.5		
Solid/stranded(mm <sup>2</sup> )		0.2-1.5/0.2-1.5		
Surge voltage category/pollution degree		III/3	III/2	II/2
Rated insulation voltage(V)		250	320	630
Rated surge voltage(kV)		4	4	4
General data				
Stripping length(mm)		9-10		
Type of insulation material group		PA 66 I		
Inflammability class acc. To UL 94		V0		
Borehole diameter/pin dimensions(mm)		1.4/0.6*0.9		



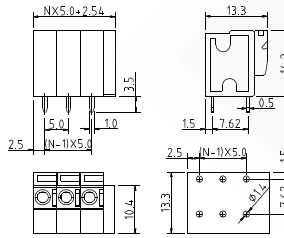
**SCAZ350** Pitch 3.5mm  
Poles 1p~24p  
PCB spring-cage terminal blocks, horizontal wire inlet



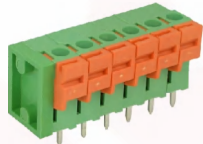
Technical data				
Approval				
Technical data(UL/cUL)	Use Group	B	C	D
Nominal voltage (V)		300	-	300
Nominal current (A)		5.5	-	5.5
Connection capacity(AWG)		22-16	-	22-16
Technical data in accordance with IEC				
Rated insulation voltage at pollution degree 2 (V)		400		
Rated current/conductor cross-section (A/mm <sup>2</sup> )		6/1.5		
Solid/stranded(mm <sup>2</sup> )		0.5-1.5/0.5-1.5		
Surge voltage category/pollution degree		III/3	III/2	II/2
Rated insulation voltage(V)		250	400	630
Rated surge voltage(kV)		4	4	4
General data				
Stripping length(mm)		9-10		
Type of insulation material group		PA 66 I		
Inflammability class acc. To UL 94		V0		
Borehole diameter/pin dimensions(mm)		1.2/0.4*0.8		



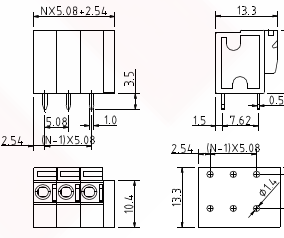
**SAVO500** Pitch 5.0mm  
Poles 1p~24p  
PCB spring-cage terminal blocks, vertical wire inlet



Technical data				
Approval				
Technical data(UL/cUL)	Use Group	B	C	D
Nominal voltage (V)		300	-	300
Nominal current (A)		10	-	10
Connection capacity(AWG)		24-14	-	24-14
Technical data in accordance with IEC				
Rated insulation voltage at pollution degree 2 (V)		320		
Rated current/conductor cross-section (A/mm <sup>2</sup> )		15/2.5		
Solid/stranded(mm <sup>2</sup> )		0.2-2.5/0.2-1.5		
Surge voltage category/pollution degree		III/3	III/2	II/2
Rated insulation voltage(V)		250	320	630
Rated surge voltage(kV)		4	4	4
General data				
Stripping length(mm)		9-10		
Type of insulation material group		PA 66 I		
Inflammability class acc. To UL 94		V0		
Borehole diameter/pin dimensions(mm)		1.4/0.5*1		



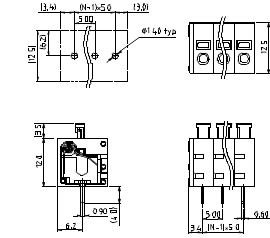
**SAVO508** Pitch 5.08mm  
Poles 1p~24p  
PCB spring-cage terminal blocks, vertical wire inlet



Technical data				
Approval				
Technical data(UL/cUL)	Use Group	B	C	D
Nominal voltage (V)		300	-	300
Nominal current (A)		10	-	10
Connection capacity(AWG)		24-14	-	24-14
Technical data in accordance with IEC				
Rated insulation voltage at pollution degree 2 (V)		320		
Rated current/conductor cross-section (A/mm <sup>2</sup> )		15/2.5		
Solid/stranded(mm <sup>2</sup> )		0.2-2.5/0.2-1.5		
Surge voltage category/pollution degree		III/3	III/2	II/2
Rated insulation voltage(V)		250	320	630
Rated surge voltage(kV)		4	4	4
General data				
Stripping length(mm)		9-10		
Type of insulation material group		PA 66 I		
Inflammability class acc. To UL 94		V0		
Borehole diameter/pin dimensions(mm)		1.4/0.5*1		



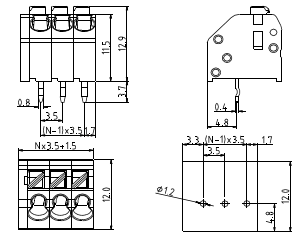
**SPVO500** Pitch 5.0mm  
Poles 2p~24p  
PCB spring-cage terminal blocks, vertical wire inlet



Technical data				
Approval				
Technical data(UL/cUL)	Use Group	B	C	D
Nominal voltage (V)		300	-	300
Nominal current (A)		10	-	10
Connection capacity(AWG)		26-16	-	26-16
Technical data in accordance with IEC				
Rated insulation voltage at pollution degree 2 (V)		320		
Rated current/conductor cross-section (A/mm <sup>2</sup> )		10/1.5		
Solid/stranded(mm <sup>2</sup> )		0.2-1.5/0.2-1.5		
Surge voltage category/pollution degree		III/3	III/2	II/2
Rated insulation voltage(V)		250	320	630
Rated surge voltage(kV)		4	4	4
General data				
Stripping length(mm)		9-10		
Type of insulation material group		PA 66 I		
Inflammability class acc. To UL 94		V0		
Borehole diameter/pin dimensions(mm)		1.4/0.6*0.9		



**SCAF350** Pitch 3.5mm  
Poles 1p~24p  
PCB spring-cage terminal blocks, angled 45D wire inlet

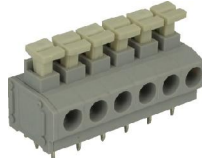
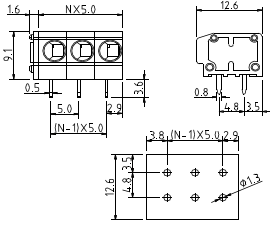


Technical data				
Approval				
Technical data(UL/cUL)	Use Group	B	C	D
Nominal voltage (V)		300	-	150
Nominal current (A)		5.5	-	5.5
Connection capacity(AWG)		22-16	-	22-16
Technical data in accordance with IEC				
Rated insulation voltage at pollution degree 2 (V)		400		
Rated current/conductor cross-section (A/mm <sup>2</sup> )		6/1.5		
Solid/stranded(mm <sup>2</sup> )		0.5-1.5/0.5-1.5		
Surge voltage category/pollution degree		III/3	III/2	II/2
Rated insulation voltage(V)		250	400	630
Rated surge voltage(kV)		4	4	4
General data				
Stripping length(mm)		9-10		
Type of insulation material group		PA 66 I		
Inflammability class acc. To UL 94		V0		
Borehole diameter/pin dimensions(mm)		1.2/0.4*0.8		



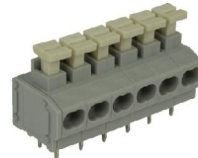
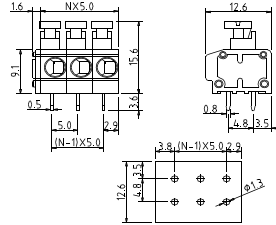
**SBSB50** Pitch 5.0mm  
Poles 1p~24p

PCB spring-cage terminal blocks, without actuation rocker  
single horizontal wire inlet



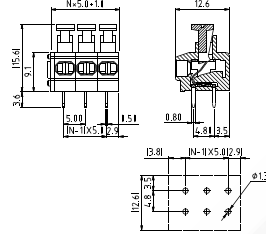
**SBSA500** Pitch 5.0mm  
Poles 1p~24p

PCB spring-cage terminal blocks, with actuation rocker  
single horizontal wire inlet



**SBDA500** Pitch 5.0mm  
Poles 1p~24p

PCB spring-cage terminal blocks, with actuation rocker  
single horizontal wire inlet



Technical data		Approval		
Technical data(UL/cUL)	Use Group	B	C	D
Nominal voltage (V)		300	-	300
Nominal current (A)		10	-	10
Connection capacity(AWG)		20-14	-	20-14
Technical data in accordance with IEC				
Rated insulation voltage at pollution degree 2 (V)		320		
Rated current/conductor cross-section (A/mm <sup>2</sup> )		10/2.5		
Solid/stranded(mm <sup>2</sup> )		0.5-2.5/0.5-1.5		
Surge voltage category/pollution degree		III/3	III/2	II/2
Rated insulation voltage(V)		250	320	630
Rated surge voltage(kV)		4	4	4
General data				
Stripping length(mm)		9-10		
Type of insulation material group		PA 66 I		
Inflammability class acc. To UL 94		V0		
Borehole diameter/pin dimensions(mm)		1.3/0.5*0.8		

Technical data		Approval		
Technical data(UL/cUL)	Use Group	B	C	D
Nominal voltage (V)		300	-	300
Nominal current (A)		10	-	10
Connection capacity(AWG)		20-14	-	20-14
Technical data in accordance with IEC				
Rated insulation voltage at pollution degree 2 (V)		320		
Rated current/conductor cross-section (A/mm <sup>2</sup> )		10/2.5		
Solid/stranded(mm <sup>2</sup> )		0.5-2.5/0.5-1.5		
Surge voltage category/pollution degree		III/3	III/2	II/2
Rated insulation voltage(V)		250	320	630
Rated surge voltage(kV)		4	4	4
General data				
Stripping length(mm)		9-10		
Type of insulation material group		PA 66 I		
Inflammability class acc. To UL 94		V0		
Borehole diameter/pin dimensions(mm)		1.3/0.5*0.8		

Technical data		Approval		
Technical data(UL/cUL)	Use Group	B	C	D
Nominal voltage (V)		300	-	300
Nominal current (A)		8	-	8
Connection capacity(AWG*2)		24-18	-	24-18
Technical data in accordance with IEC				
Rated insulation voltage at pollution degree 2 (V)		320		
Rated current/conductor cross-section (A/mm <sup>2</sup> )		10/2.5		
Solid/stranded(mm <sup>2</sup> )		0.2-0.75/0.2-0.75		
Surge voltage category/pollution degree		III/3	III/2	II/2
Rated insulation voltage(V)		250	320	630
Rated surge voltage(kV)		4	4	4
General data				
Stripping length(mm)		9-10		
Type of insulation material group		PA 66 I		
Inflammability class acc. To UL 94		V0		
Borehole diameter/pin dimensions(mm)		1.3/0.5*0.8		

